

# EDC | Shaping the Pennsylvania Economy

## IMPACT

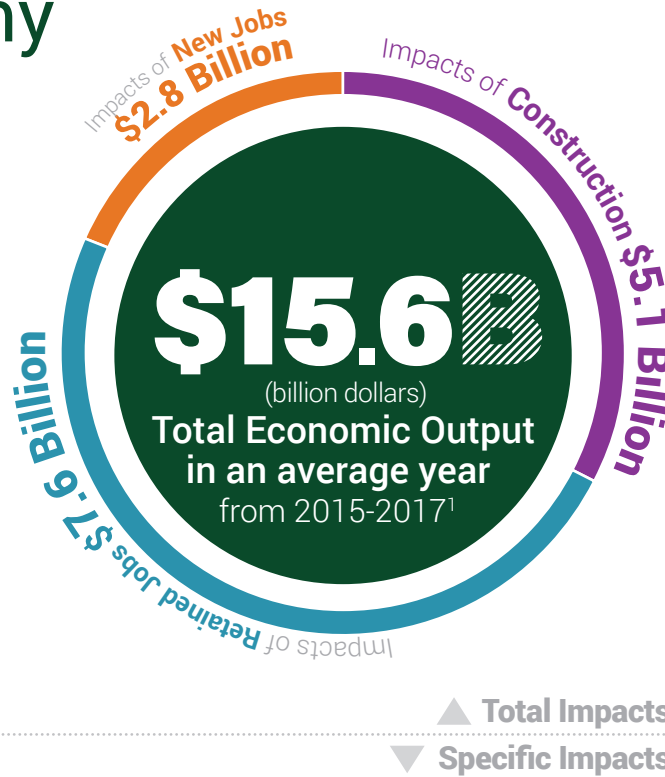


PENNSYLVANIA  
ECONOMIC  
DEVELOPMENT  
ASSOCIATION

### EDC Services

Economic Development Corporations (EDCs) provide a wide range of services to grow their local economies, including:

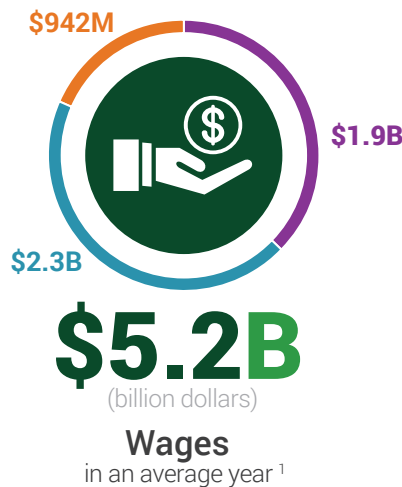
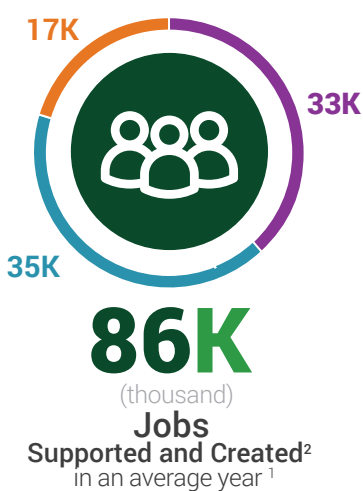
- Business Retention and Expansion
- Source Investment Capital
- Property (Re)development and Management
- Business & Talent Attraction
- Navigating Regulatory Systems
- Administering Loan Programs
- Coordinating Partners and Projects



**New Jobs**  
EDCs work to attract new companies and expand existing companies to bring new jobs. EDCs also provide financing services to help businesses get access to capital.

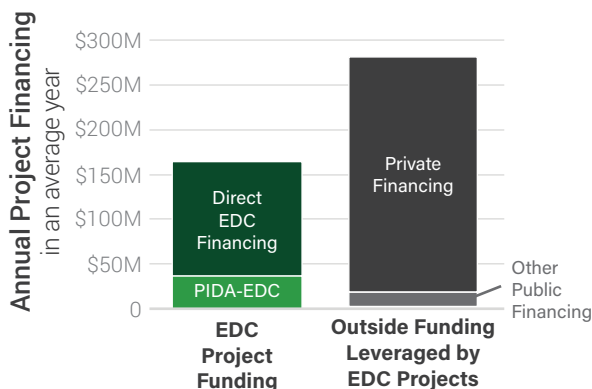
**Construction**  
Every dollar that EDCs invest in their community through construction activity leverages \$44 into the community from federal and private sources.

**Retained Jobs**  
EDCs provide services to keep business located and operating in their communities, keeping jobs from leaving or being eliminated.



### EDC Financing Leverage

Every \$1.00 that EDCs provide in financing leverages **\$1.58** in private financing!



### EDCs Developed and Managed:



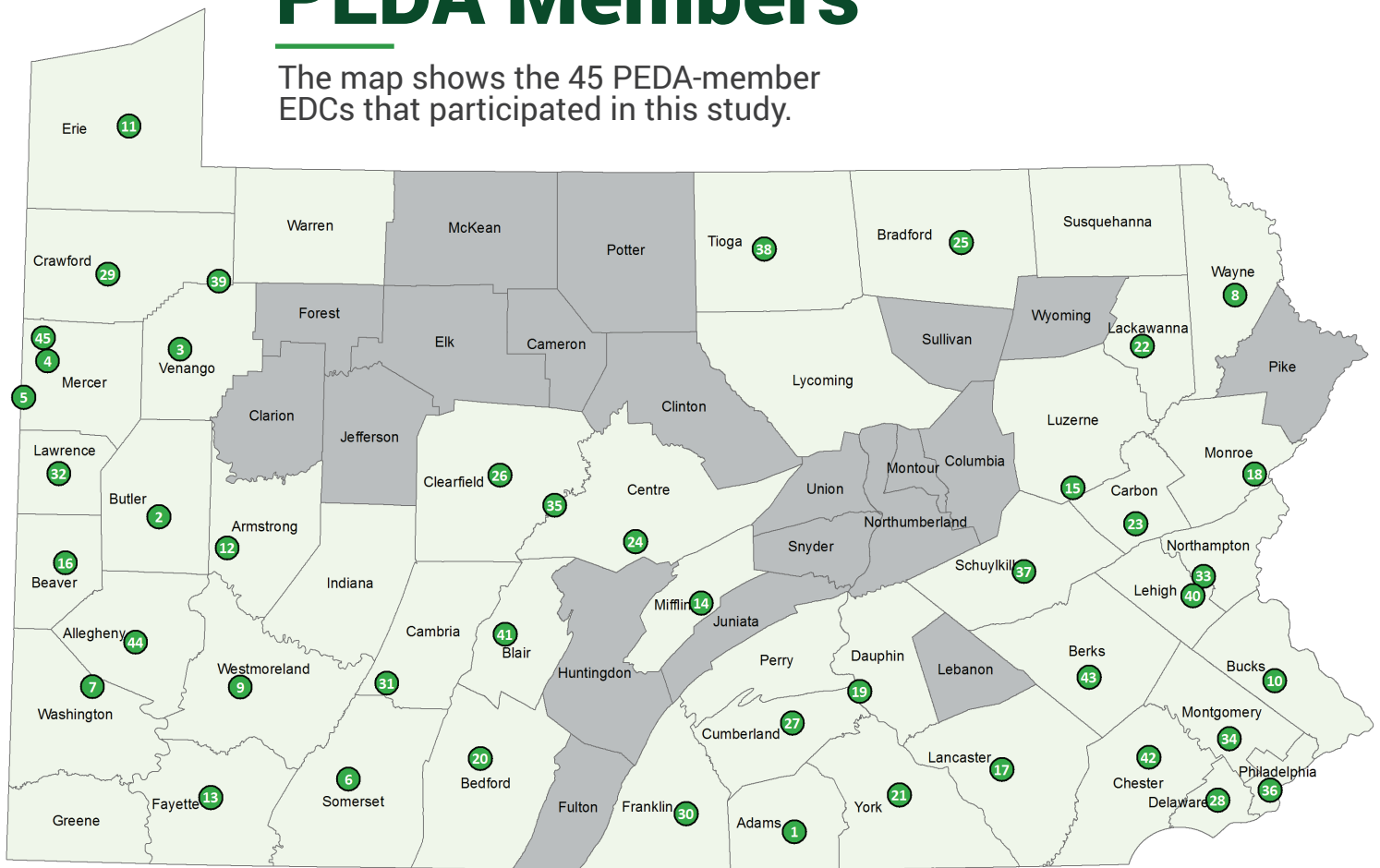
[1] These numbers were estimated through an input-output model using IMPLAN, an industry-standard economic impact modeling platform. The estimates refer to average annual economic impacts (including direct, indirect, and induced impacts) generated by EDC activity in PA in 2015, 2016, and 2017.

[2] This includes both new jobs and existing jobs that were supported through EDC activities. New jobs may include jobs that relocated from another place or one region to another. Total job creation should not be totaled across years, for in many cases a particular job may be supported in multiple consecutive years.

[3] State tax impact estimates were calculated considering only indirect and induced impacts to be conservative and account for tax incentives provided in economic development projects.

# Participating PEDA Members

The map shows the 45 PEDA-member EDCs that participated in this study.



1. Adams Economic Alliance
2. Community Development Corporation of Butler County
3. Franklin Industrial and Commercial Development Authority
4. Greenville-Reynolds Development Corporation
5. Penn-Northwest Development Corporation
6. Somerset County Economic Development Council
7. Washington County Chamber of Commerce and Washington County Industrial Development Authority
8. Wayne Economic Development Corporation
9. Westmoreland County Industrial Development Corporation
10. Bucks County Economic Development Corporation
11. The Redevelopment Authority of the County of Erie
12. Armstrong County Industrial Development Council
13. Fay-Penn Economic Development Council
14. Mifflin County Industrial Development Council
15. Greater Hazleton CAN DO, Inc
16. Beaver County Corporation for Economic Development
17. Economic Development Company of Lancaster County
18. Pocono Mountains Industries, and Pocono Mountains Economic Development Corporation
19. Capital Region Economic Development Corporation
20. Bedford County Development Association
21. York County Economic Alliance
22. Scranton Lackawanna Industrial Building Company
23. Carbon Chamber and Economic Development Corporation

24. Chamber of Business and Industry Centre County
25. Central Bradford Progress Authority
26. Clearly Ahead Development
27. Cumberland Area Economic Development Corporation
28. Delaware County Commerce Center
29. Economic Progress Alliance of Crawford County
30. Franklin County Area Development Corporation
31. Johnstown Area Regional Industries
32. Lawrence County Economic Development Corporation
33. Lehigh Valley Economic Development Corporation
34. Montgomery County Commerce Department
35. Moshannon Valley Economic Development Partnership
36. Philadelphia Industrial Development Corporation
37. Schuylkill Economic Development Corporation
38. Tioga County Development Corporation
39. Titusville Community Development Corporation
40. Allentown Economic Development Corporation
41. Altoona Blair County Development Corporation
42. Chester County Economic Development Council
43. Greater Reading Chamber Alliance
44. Regional Industrial Development Corporation of Southwestern Pennsylvania
45. Greenville Area Economic Development Center

**Counties shown in green have a participating EDC.**

Report created by:

